

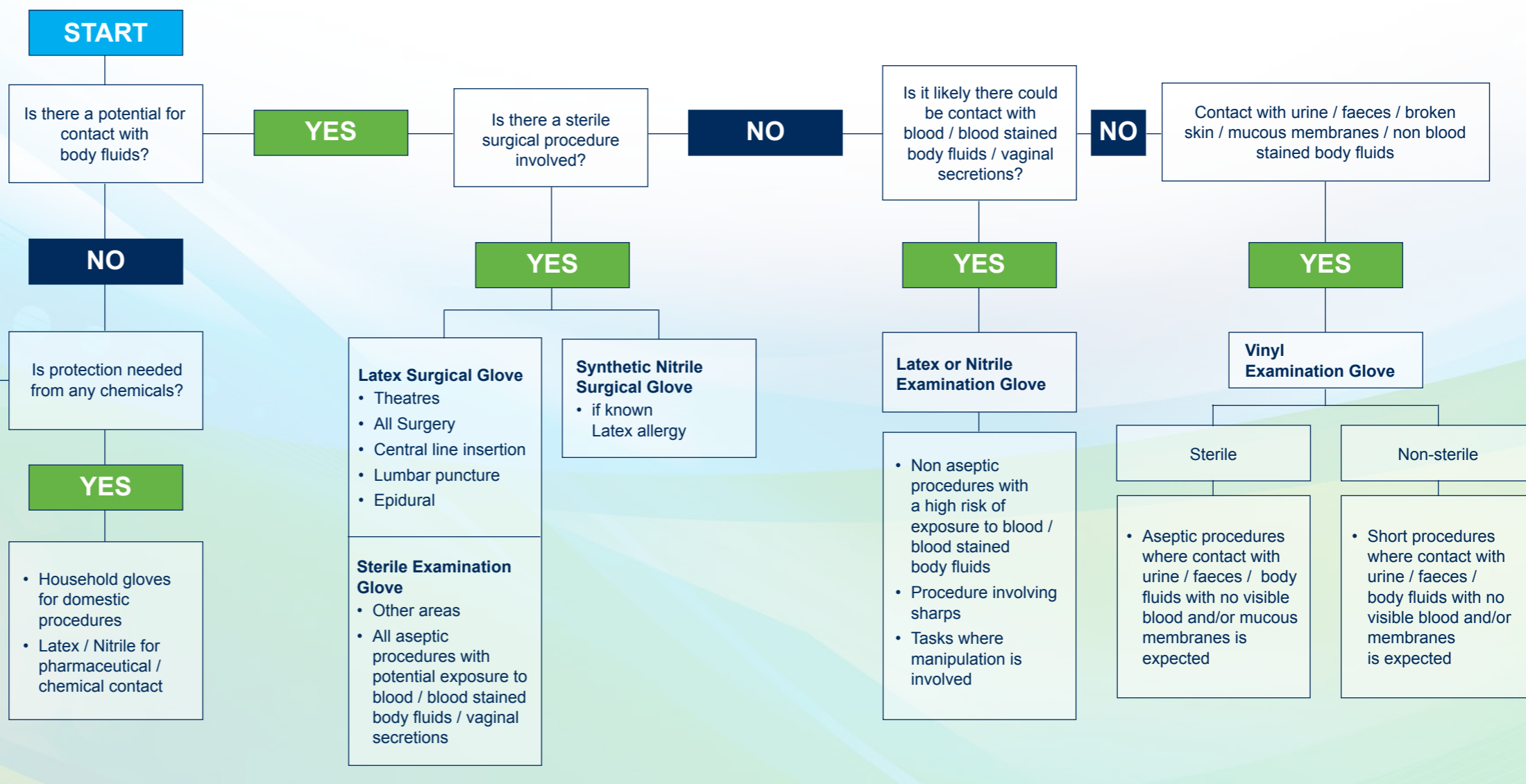
# RISK ASSESSMENT FOR GLOVE CHOICE

## CHOOSING THE RIGHT GLOVE

Gloves are produced from many different materials, each with specific properties for specific applications. Following a full and informed risk assessment the correct glove choice can be made.

### NOTE

- Gloves do not replace good hand washing
- Always wash your hands after removing your gloves
- Apply aqueous based hand creams only
- Always adhere to the infection control guidelines



FOR MORE INFORMATION OR TO ORDER: